

HiveManager Online 6.4

Network Management System



HiveManager Online is a cloud-enabled enterprise-class NMS for Aerohive devices

Aerohive Networks HiveManager Online NMS is a cloud-enabled enterprise-class management system for Aerohive networking products. HiveManager Online offers the same simple policy creation, firmware upgrades, and centralized monitoring options as the on-premises version of HiveManager¹, however, without the need to deploy another device in your network. HiveManager Online is hosted within secure Tier IV SAS 70 Type II data centers, with scheduled backups and disaster recovery capabilities.

HiveManager Online is designed to make it cost effective to start small and grow a network with no upfront costs beyond the Aerohive networking devices. HiveManager Online can be deployed in two different versions, Express and Enterprise. Express, designed for smaller, wi-fi-only deployments, streamlines the interface without compromising enterprise-class features. Enterprise offers the full capabilities of the HiveManager platform for larger organizations with sophisticated policy requirements. HiveManager Online allows administrators to start with Express and seamlessly migrate to Enterprise for no additional fee.

HiveManager Online also includes a portal called “MyHive,” which provides single sign-on access to Aerohive resources such as HiveManager Online, support forums, and a redirector server, which manages and correlates Aerohive device assignments to HiveManager Online instances. Customers access their own HiveManager Online instance, and partners can use the MyHive system to keep track of many instances for their customers.

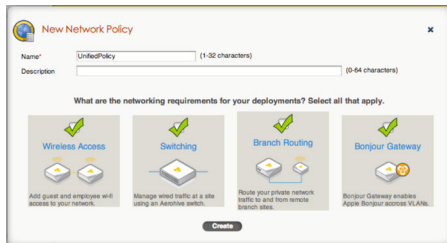
Features & Benefits

Bringing up a network of Aerohive devices is as simple as plugging them in and browsing to the HiveManager Online address. The Aerohive devices are pre-provisioned to connect to HiveManager Online using the secure CAPWAP-DTLS protocol which traverses NAT and firewalls. This means that the Aerohive devices will automatically connect and register with the customer’s account in HiveManager Online enabling configuration from any browser. With HiveManager Online, it is possible to bring up an entire enterprise-class network in just a few minutes. HiveManager Online offers other key benefits:

- Unified policy, configuration, and reporting with contextual awareness for wireless, routing, switching, VPN, IP address management, and security policies
- Customizable dashboard with application visibility and control based on user identity
- Plug and play deployment—administrator plugs in the devices and browses to the interface
- No appliance to install, configure, upgrade, or patch
- Green—no rack space, cooling, or power requirements
- Lower cost of entry—eliminate large upfront CAPEX with flexible OPEX plans
- Integrated tools like a Planner, Packet Capture and Client Tracker enable easy scoping, deployment and troubleshooting without additional expense
- Web-based robust application interface allows for managing Aerohive devices from anywhere
- Spectrum analysis to detect and identify non-wi-fi sources of interference at 2.4GHz or 5GHz
- Client-device and Operating System reporting with top clients by usage, peak trends per SSID, and client distribution by Aerohive device
- Powerful device templates and device classification tags allow applying custom configurations across device groups based on hierarchy, location, or function.

[Contact us today](#) to learn how your organization can benefit from Aerohive networking solutions.

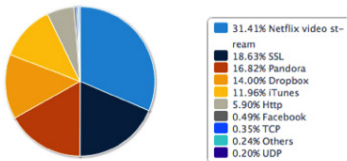
¹ HiveManager Online has all of the features of the stand-alone HiveManager except Virtual HiveManager and admin directory authentication.



Configure wireless, switching, routing, and services in a single unified policy with a cohesive workflow

Top 10 Applications by Usage - Summary

Report Period: Jan 17, 2013, 1:59PM - Jan 17, 2013, 2:59PM



Optimize user experience by harnessing the power of real-time application visibility and policy enforcement at the network edge

Aerohive Networks, Inc.

330 Gibraltar Drive
Sunnyvale, California 94089 USA
phone 408.510.6100
toll-free 866.918.9918
fax 408.510.6199
www.aerohive.com

Product Features

Easy Administration

- Online management platform can be configured in minutes
- Grows with your deployment; cost-effectively scales from one device to thousands
- Web-based administration with HTML5-enhanced graphical user interface
- Single sign-on access via MyHive provides access to HiveManager Online, support forums, and redirector

Simple Central Management

- Unified policy, configuration, and management for thousands of Aerohive devices
- Powerful policy templating feature enables updates to groups of APs, routers, and switches with a few clicks
- Simple centralized firmware upgrades with distributed download functionality decrease WAN utilization and download time
- Staged configuration and image updates ensure devices are updated when they reconnect to HiveManager
- Powerful device templates and device classification tags allow applying custom configurations across device groups based on hierarchy, location, or function

Security and Privacy

- Customer and network data is private and secure
- No customer traffic traverses Aerohive's network

Reliability

- Multiple SAS 70 Type II, Tier-4 data centers for regional access and data privacy
- High availability redundancy and 24x7 monitoring

Zero-Touch Config Installation and Deployment

- Once plugged in, devices will automatically connect to the cloud for provisioning
- The staging server redirects Aerohive devices to the right HiveManager Online account or a customer's on-premise HiveManager
- Auto-Provisioning with Delegated Remote Deployment automatically configures new devices

Granular Control

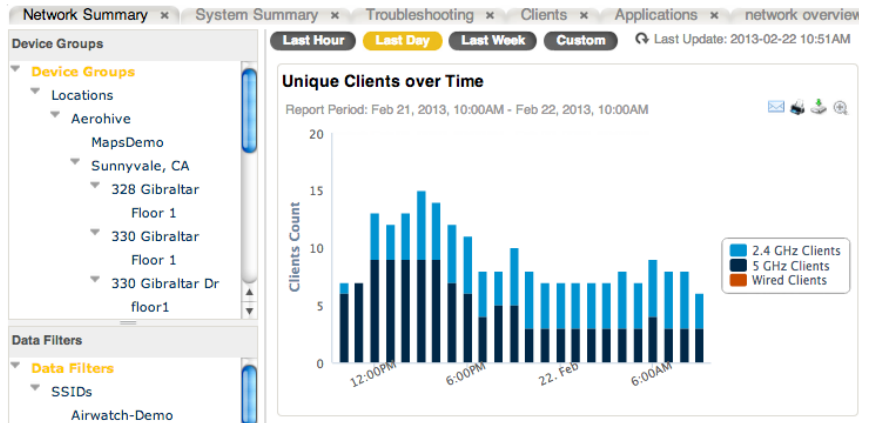
- Application QoS and Firewall with detailed user and device context-based policies
- Configuration of cloud proxy to split Internet and corporate VPN traffic with integration to Websense SaaS
- Configuration of L2 and L3 IPSec VPNs
- Automatic and flexible IP address allocation and distribution across entire remote branch network
- TeacherView Application included to monitor and redirect student wireless clients during class time

Reporting and Monitoring

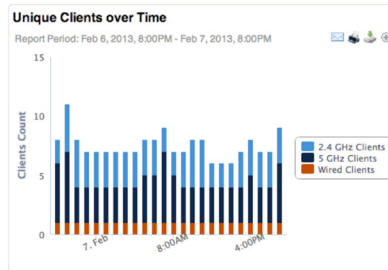
- Dashboard widgets organized into pre-defined or customizable perspectives
- Layer 7 application dashboard and reports by usage, clients, users, location, and SSID
- Configuration audit capabilities ensure all configurations are up to date
- PCI 3.0 Compliance Reporting
- Bandwidth usage, client, user activity, OS distribution, and SLA compliance reports
- Rogue and external AP and clients collection and correlation
- Real-time monitoring of alarms and events
- Subscription and support license status summary

RF Visualization

- Network maps with integrated aerial views and automatic floor planning enable easy visualization of topology and status
- Real-time heat-maps show RF propagation
- State-of-the-art Planning Tool with aerial maps, multi-floor auto-placement, coverage maps, and option to clone buildings and floors
- Built-in client and rogue location detection and placement on a floorplan
- Geo-coded topology hierarchy with automatic area maps
- Spectrum analysis to detect and identify sources of interference



Personalize your dashboard with customizable widgets and built-in contextual filters that enable detailed network visibility across your entire deployment

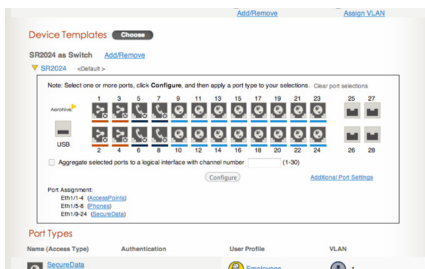


Display unified wired and wireless client information to aid in calculating total number of connected devices on your network

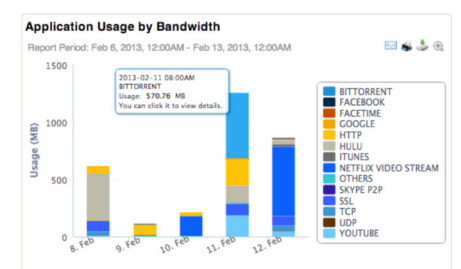
Top 20 Users by Usage
Report Period: Feb 15, 2013, 12:00AM - Feb 22, 2013, 12:00AM

User	Usage	# of Applications	Recent AP	Last Seen
<i>Errol Flynn</i>	251.86 MB	11	AH-B21dc0	2013-02-21 08:00AM
<i>Warren Harding</i>	220.33 MB	11	AH-B21dc0	2013-02-21 08:00AM
<i>Sinclair Lewis</i>	146.26 MB	13	AH-B21b90	2013-02-21 08:00AM
<i>Herbert Hoover</i>	15.48 MB	7	AH-B21dc0	2013-02-20 08:00AM
<i>F. Scott Fitzgerald</i>	1.27 MB	5	AH-B21dc0	2013-02-21 08:00AM
<i>Gretna Green</i>	1.07 MB	6	AH-B21dc0	2013-02-21 08:00AM
<i>Woodrow Wilson</i>	0.80 MB	7	AH-B21b90	2013-02-20 08:00AM
<i>Ernest Hemingway</i>	0.40 MB	6	AH-B21dc0	2013-02-21 08:00AM

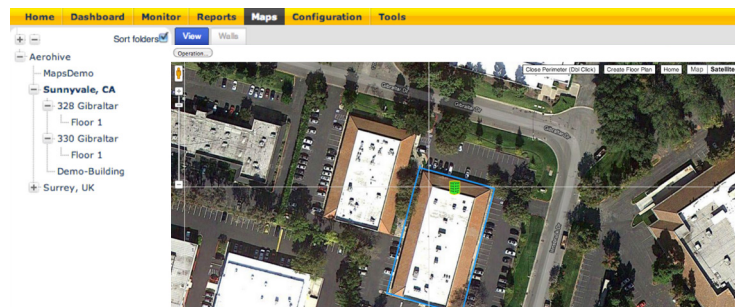
Monitor user activity and create policies based on available context to ensure quality experience on any device



Create powerful templates to standardize configuration across your devices and make exceptions when necessary



View detailed application usage information across your entire network and see exactly how your valuable bandwidth is being consumed



Design and monitor your network using topology maps with integrated aerial views and automatic floor planning as well as real-time heat maps to show wireless coverage

SKU	DESCRIPTION
HiveManager Online Service - includes software subscription and customer portal access	
AH-HMOL-XXX-1YR	HiveManager Online Enterprise for 1 Aerohive device for 1 year
AH-HMOL-XXX-3YR	HiveManager Online Enterprise for 1 Aerohive device for 3 years
AH-HMOL-XXX-5YR	HiveManager Online Enterprise for 1 Aerohive device for 5 years