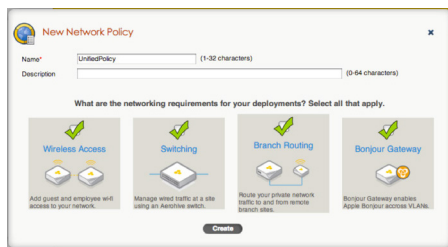


# HiveManager 6.6r1

## Network Management System

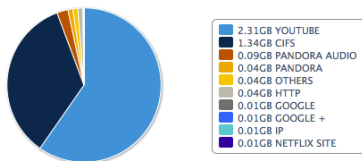
HiveManager 6.6r1 is an enterprise-class NMS for Aerohive devices.



Configure wireless, switching, routing, and services on a single unified policy with a cohesive workflow

### Top 10 Applications by Usage - Summary

Report Period: Sep 8, 2013, 12:00AM - Sep 9, 2013, 12:00AM



Optimize user experience by harnessing the power of real-time application visibility and policy enforcement at the network edge

**Aerohive Networks, Inc.**  
 330 Gibraltar Drive  
 Sunnyvale, California 94089 USA  
 phone 408.510.6100  
 toll-free 866.918.9918  
 fax 408.510.6199  
[www.aerohive.com](http://www.aerohive.com)

Aerohive Networks HiveManager NMS is a management system for Aerohive networking products. HiveManager enables simple policy creation, firmware upgrades, configuration updates, and centralized monitoring from a single console.

Aerohive combines enterprise-class access points, branch routers, and switches with a suite of Cooperative Control protocols and functions to provide unified wired and wireless access that ensures consistent policy, permissions, and security based on identity and device type regardless of user location. HiveManager provides a centralized management console for the entire network which enables global policy, configuration, and monitoring with full application visibility of thousands of APs, routers, and switches. HiveManager lowers operating costs by speeding deployment, configuration and monitoring of the entire network.

### Features & Benefits

Bringing up a network of Aerohive devices is as easy as plugging them in and browsing to the HiveManager web interface. Aerohive devices connect to the HiveManager using the secure CAPWAP-DTLS protocol which traverses NAT and firewalls. It is possible to bring up an entire enterprise-class network in just a few minutes. HiveManager offers other key benefits, including:

- Customizable dashboard with application visibility and control based on user identity
- Unified policy, configuration, and reporting with contextual awareness for wireless, routing, switching, VPN, IP address management, and security policies
- Streamlined Express mode designed for Wi-Fi networking deployments
- Advanced Enterprise mode which supports larger organizations with sophisticated policy requirements
- Integrated Planner, Packet Capture, and Client Tracker tools to enable easy scoping, deployment, and remote troubleshooting
- Spectrum analysis to detect and identify non-Wi-Fi sources of interference in the 2.4 GHz and 5 GHz bands
- Client device and operating system reporting with top clients by usage, peak trends per SSID, and client distribution by Aerohive device
- Powerful device templates and device classification tags allow the application of custom configurations across device groups based on hierarchy, location, or function

HiveManager is accessible via a web browser on Windows, Linux, or Mac OS X, providing a robust web application interface with which to access the management interface. With advanced features like zero-configuration deployment, integrated IP address management and virtual HiveManagers, HiveManager provides market-leading unified management, monitoring, and remote visibility for all your Aerohive devices.

Product	Maximum APs without AVC	Maximum APs with AVC	Maximum Virtual HiveManagers
HiveManager High-Capacity Appliance	8000	3000	500
HiveManager Virtual Appliance	15000*	6000*	500

\* Scalability dependent on the VMware server and deployment configuration. \*\* Based on the hardware configuration of the host platform

Contact us today to learn how your organization can benefit from Aerohive networking solutions.

# Product Features

## Simple Central Management

- Unified access, policy, configuration, and management for thousands of Aerohive devices
- Web-based administration with HTML5-enhanced graphical user interface
- User group policies can be applied networkwide or to individual Aerohive devices and enforced consistently across both wireless and wired networks
- Powerful policy template feature enables updates to groups of APs, branch routers, and switches with a few clicks
- Simple centralized firmware upgrades with distributed download functionality to decrease WAN utilization & download time
- Staged configuration and auto-provisioned image updates ensure devices are updated when they reconnect to HiveManager

## RF Planning and Visualization

- Network maps with integrated aerial views and automatic floor planning enable easy visualization of topology and status
- Real-time heat-maps show RF propagation within a network
- State-of-the-art Planning Tool with aerial maps, multi-floor auto-placement, coverage maps, and options to clone buildings and floors
- Built-in client and rogue location detection and placement on a floorplan
- Spectrum analysis to detect and identify sources of Wi-Fi interference
- Geo-coded topology hierarchy with automatic area maps

## HiveManager Virtualization

- Provides the ability to run multiple virtual HiveManagers on a single HiveManager appliance
- Virtual HiveManagers enable complete separation of administration for large enterprises, managed services, and multitenant environments
- Supports up to 500 virtual HiveManagers

## Zero Config Installation AP Deployment

- APs, branch routers, and switches can automatically discover their HiveManager on the same subnet or use DNS, DHCP or the Aerohive Redirector Service to find a HiveManager anywhere in the world
- Automatically provision and update or quarantine new Aerohive devices

## High Availability

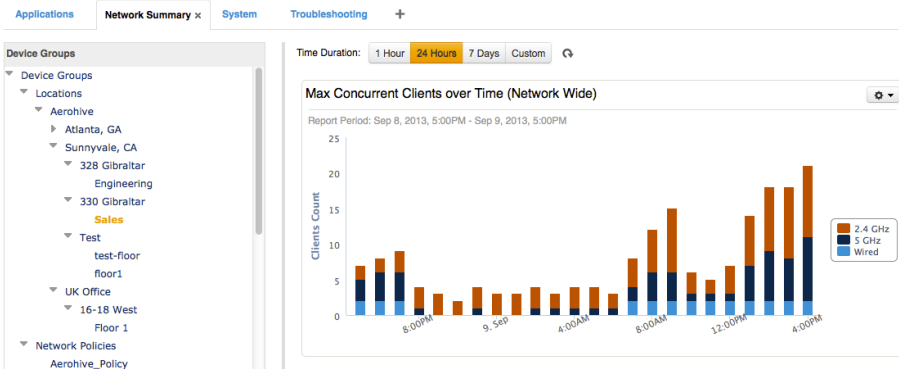
- Disaster recovery high availability support with automated database synchronization
- Designed to work across multiple sites and/or data centers

## Granular Control

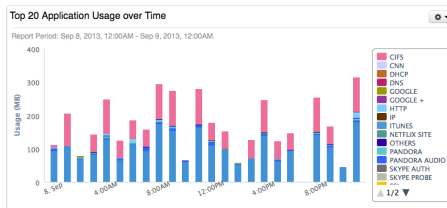
- Application QoS and firewall with detailed user and device context-based policies
- Configuration of cloud proxy to split Internet and corporate VPN traffic with integration to Websense SaaS
- Configuration of L2 and L3 IPsec VPNs
- Automatic and flexible IP address allocation and distribution across entire remote branch network
- TeacherView application included to monitor and redirect student wireless clients during class time

## Reporting and Monitoring

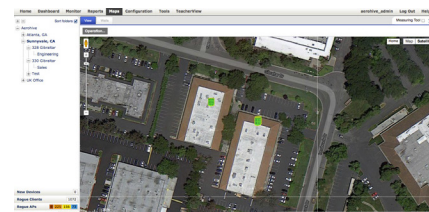
- Dashboard widgets organized into predefined or customized perspectives
- Layer 7 application dashboard and reports by usage, clients, users, location, and SSID
- Customized application definitions for use in context-based QoS and firewall policies
- Configuration audit capabilities ensure all configurations are up to date
- Bandwidth usage, client, user activity, OS distribution, and SLA compliance reports
- Rogue and external AP and clients collection and correlation
- Real-time monitoring of alarms and events
- PCI 3.0 compliance reporting



Personalize your dashboard with customizable widgets and built-in contextual filters that enable detailed network visibility across your entire deployment



View detailed application usage information across your entire network and see exactly how your valuable bandwidth is being consumed



Design and monitor your network using topology maps with integrated aerial views and automatic floor planning as well as real-time heat maps to show wireless coverage

# Product Specifications

## HiveManager High-Capacity Device Specifications

- Form factor: 1U rack-mountable appliance
- Chassis dimensions: 17" W x 1 3/4" H x 16 1/3" D (43.1 cm W x 4.4 cm H x 41.5 cm D)
- Weight: 18 lb. (8.2 kg)
- Console Port: RJ-45
- USB port: standard Type A USB 2.0 port
- Ethernet ports: 6 autosensing 10/100/1000Base-T
- Cooling: Processor - 3x CPU fans with fan duct, 1 system cooling fan
- Memory: 8GB
- Maximum AP capacity with AVC settings turned on is 3000

## Power Specifications

- ATX (Advanced Technology Extended) auto-switching power supply with PFC (power factor corrector):
  - Input: 100 - 240 VAC
  - Output: 250 watts
- Power supply cord: standard three conductor SVT 18AWG cord with an NEMA5-15p three-prong male plug and three-pin socket

## Environmental Specifications

- Operating temperature: 32 to 104°F (0 to 40°C)
- Storage temperature: -4 to 158°F (-20 to 70°C)
- Relative humidity: 5% - 95% (noncondensing)

## VMWare Specifications

Required: HiveManager 64-bit Virtual Appliance

### Recommended Minimum Hardware (1500 APs)

- Minimum processor: Dual Core 2 GHz or better
- Minimum memory: 8 GB total (4 GB dedicated to the VM, 4 GB dedicated to the database)
- Minimum disk: 256 GB 15K RPM SAS 6 GB

### Recommended Hardware (5000 APs)

- Minimum processor: 2x Quad Core CPUs or better
- Minimum memory: 8 GB total (4 GB dedicated to the VM, 4 GB dedicated to the database)
- Minimum disk: 500 GB 15K RPM SAS 6 Gbps (min of 256 GB dedicated to the database)

### Recommended Hardware (15,000 APs)

- Minimum processor: 4x Quad Core CPUs or better
- Minimum memory: 16 GB total (8GB dedicated to the VM, 8 GB dedicated to the database)
- Minimum disk: 500 GB 15K RPM SAS 6 Gbps (Min of 256 GB dedicated to the database)
- Maximum AP capacity with AVC settings turned on is 6000

## Tested Virtualization Platforms

- ESXi 4.1 or better
- VMware Player
- VMware Fusion

SKU	DESCRIPTION
HiveManager	
AH-HM-VA	HiveManager NMS Virtual Appliance with included 3 licenses, 0 Aerohive device licenses VMware ESX or Player
AH-HM-1U	HiveManager High-Capacity 1U Appliance with included 3 VHM licenses, 0 Aerohive device licenses, non-redundant HDD and power supply
<b>HiveManager Licenses</b>	
AH-HM-LIC-1AP	1 Aerohive device license for HiveManager
AH-HM-LIC-1VHM	1 VHM license for HiveManager